

SEAFISH

Economics and Social Science

Hazel Curtis
Chief Economist
Seafish

SEAFISH

Contents

- Economic data for fisheries management
- Data collection – how we do it
- Outputs – evidence bases – what they mean
- Bespoke analyses, Economic Impact Assessments
- Economic advice in fisheries management
- Economic principles in fisheries management

SEAFISH

Economic data for fisheries

- Current data collection practices
- DCF – EU Data Collection Framework
- MMO / Marine Scotland / IFISH
- Seafish data collection
 - Review and discuss Seafish survey form for economic data

Business Name

SEAFISH

Fishing Vessel Accounts Preparation Form

Indebted organisations, NGOs and Fisheries Departments need accurate information on fleet economics to contribute to better fisheries management and also to assess the impact of management measures on the fishing fleet.

To provide this essential information, Seafish conducts surveys to report on the financial performance of all major segments of the fishing fleet.

So that we get enough accurate information, it is vital that you complete this form and accounts. In return, we can offer a personal Seafish report for your vessel.

Your information will be used confidentially. No further details can be made known to third parties without your written agreement. Further and the UK, the EU and any other public bodies will only use aggregated figures and no individual vessel will be identified in any of our reports.

Seafish is not a regulatory body and the purpose of this survey is not to report illegal activities, however as an arm's length government body, we do need to ensure that we are aware of illegal activity in the fishing industry.

VESSEL AND OWNER DETAILS

Vessel Name

Vessel PIN

Vessel Length

Vessel Owner Name (print)

Vessel Skipper Name (print)

Tel no. of vessel owner

Email of vessel owner

FUEL CONSUMPTION - we want to estimate the number of full-time equivalent jobs on board your vessel

1. How much fuel do you use per day?

2. How many litres is this a day (including all fuel used in 2015)?

3. How many days at sea was your average trip?

4. How many full-time jobs, including skipper, did your vessel support in 2015?

5. Did you employ any foreign crew in 2015?

6. Which countries did any foreign crew come from?

7. How many workers, including skipper, were on board per trip?

8. On average, how many hours per day did each crew member work?

VESSEL - we want to estimate the useful value of the UK fleet, starting with your vessel

9. What year did you purchase this vessel?

10. What is the insured / balance sheet value of your vessel?

11. Did you make any investment in your vessel in 2015, e.g. New engine, hullwork, etc?

12. What did you buy?

QUOTA & FINANCIAL ASSETS

13. Please estimate the value of your quota units at the end of 2015

14. Please estimate the value of your vessel licence (i.e. entitlements)

GENERAL

15. Currently, what are the major factors affecting the financial performance of your fishing business?

16. What are your expectations/ambitions for your fishing business over the next five years?

17. Did your vessel take part in any income generating activities other than fishing in 2015? If yes, what?

Some of the data for this survey is gathered from financial year-end accounts.

All information obtained will be treated in strict confidence in line with Seafish policy.

I am the vessel owner and I hereby give permission for Seafish to obtain from my accounts my complete financial accounts for 2015/2016 and the next three financial years (until 2018/2019).

Signature

Print Name

I am the vessel owner and I hereby give permission for Seafish to obtain from my accounts my complete financial accounts for 2015/2016.

Signature

Print Name

ACCOUNTANT CONTACT DETAILS

Name of Accountancy Firm

Contact name

Accountant Address

Accountant Tel

Accountant Email

Would you like to receive the following?

Personal annual benchmark report

2015 Economic report (small)

Quota Issues Magazine

To receive these details, please provide full postal address

SEAFISH

Data Collection – how we do it
Seafish fleet economic survey

Animated film, followed by questions.

[Link to animated film](#)

YouTube GB

Search

Quay Issues: 2015 - The Year in Numbers

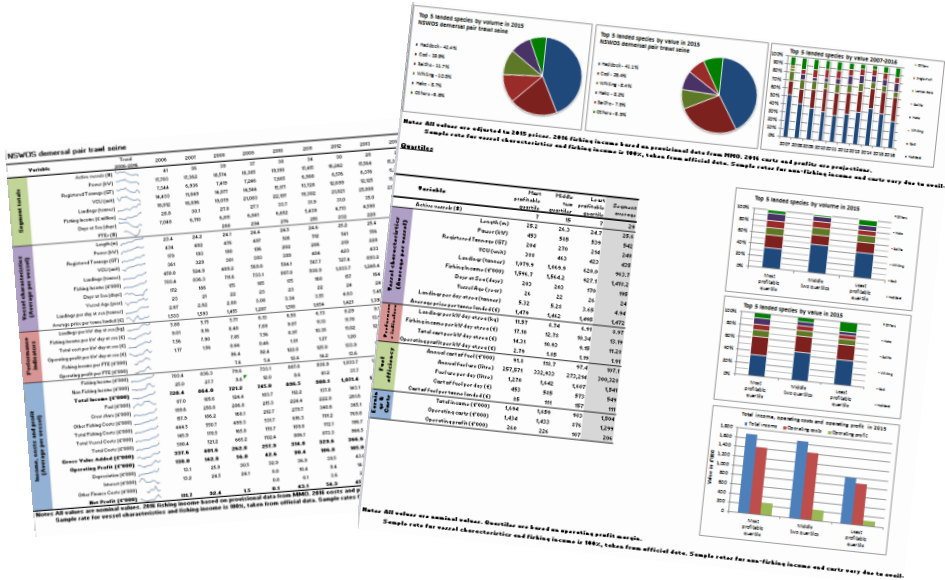
SeafishTheAuthority

2

SEAFISH

Outputs and Evidence
Review and discuss

- Seafish time series in Excel – let's take a look
- <http://www.seafish.org/research-economics/industry-economics/seafish-fleet-economic-performance-data>



SEAFISH

Bespoke Analyses, Economic Impact Assessments
Review and discuss

- Bespoke analyses
- Economic impact assessments



SEAFISH

Advice

- **How we give advice**

- STECF
- Government working groups, projects, meetings
- Enquiries, presentations, conferences
- Industry meetings, workshops, discussions
- Ad-hoc enquiry service

- **Informing decisions**

- Evidence
- Expert advice on “how to achieve...”
- Expert advice on “what would happen if...”
- Not advising what “should” be done



SEAFISH

Economic advice in fisheries management

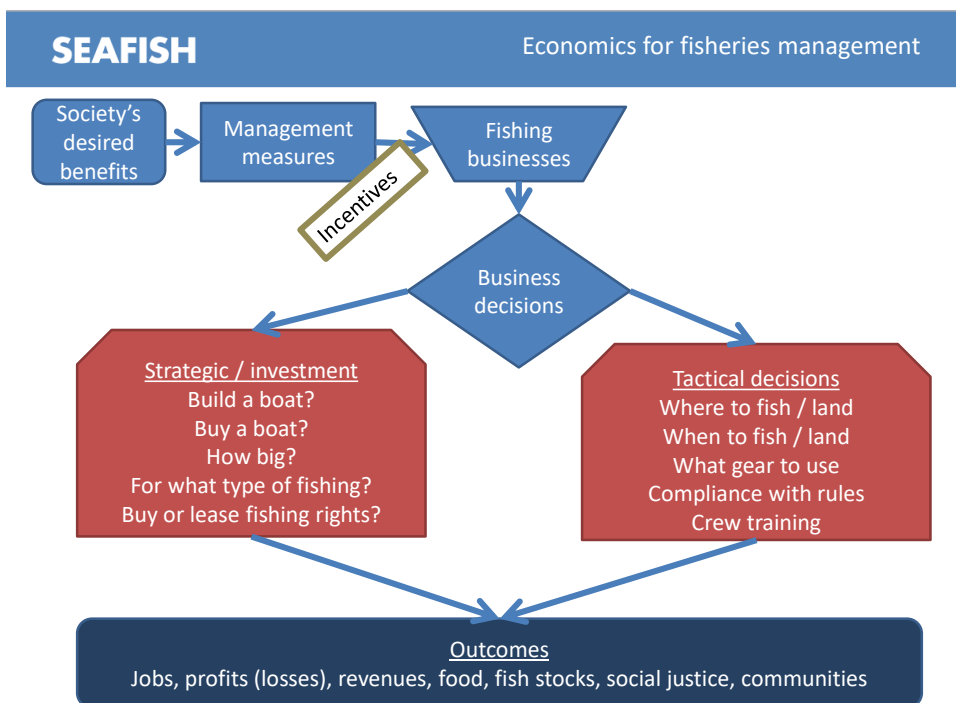
The harvest opportunities are agreed in total. Now...

- How do we make them come true?
- How do we ensure harvesting activities don't have negative side effects on the environment?

*** Ask the audience ***

What are we trying to achieve for society, what does society want from its fish stocks?

- Its own fishing industry? Good jobs.
- Revenues. Could sell our fishing rights to others?
- Food?
- Strong communities?



Incentives

- Strategic / investment decisions
- Tactical decisions

Game about incentives

SEAFISH

Recap

- Economic data for fisheries management
- Data collection – how we do it
- Outputs – evidence bases – what they mean
- Bespoke analyses, Economic Impact Assessments
- Economic advice in fisheries management
- Economic principles in fisheries management

SEAFISH**Thank you**

Hazel.Curtis@seafish.co.uk

18 Logie Mill
Logie Green Road
Edinburgh EH7 4HS

T: +44 (0)131 558 3331
F: +44 (0)131 558 1442
E: seafish@seafish.co.uk