

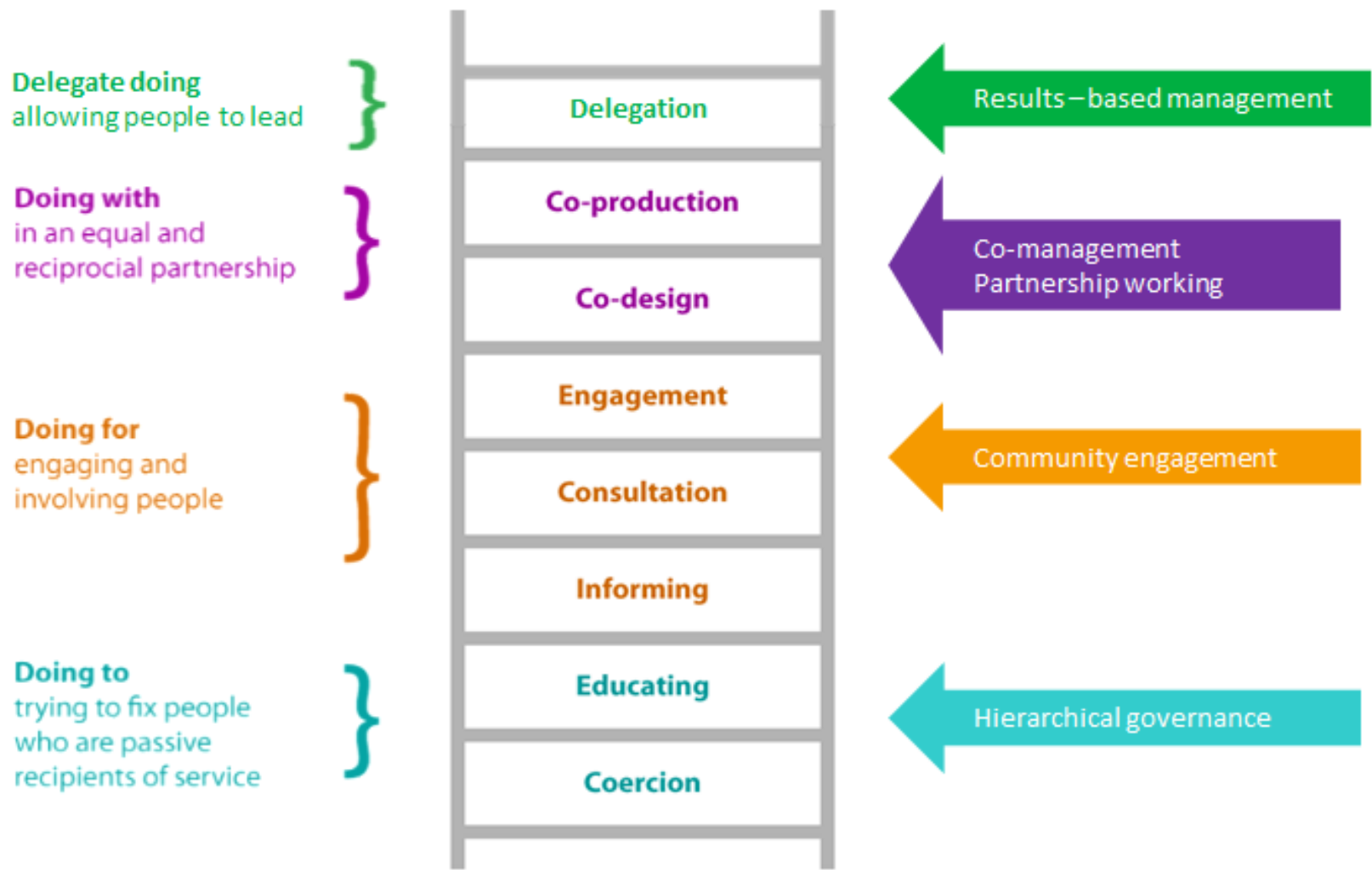


Department
for Environment
Food & Rural Affairs

What is co-management?

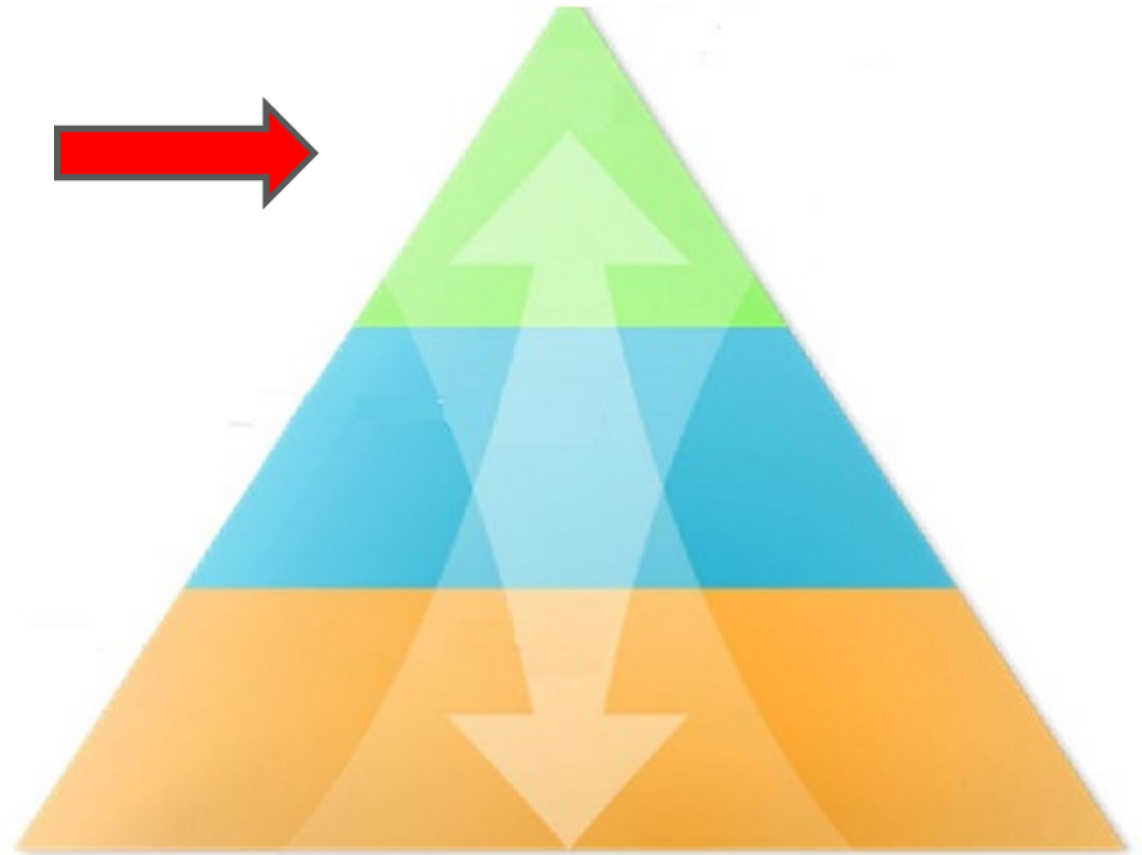
Dr Edward Hind-Ozan
Senior Research Officer (Social Science)
Marine & Fisheries, Defra





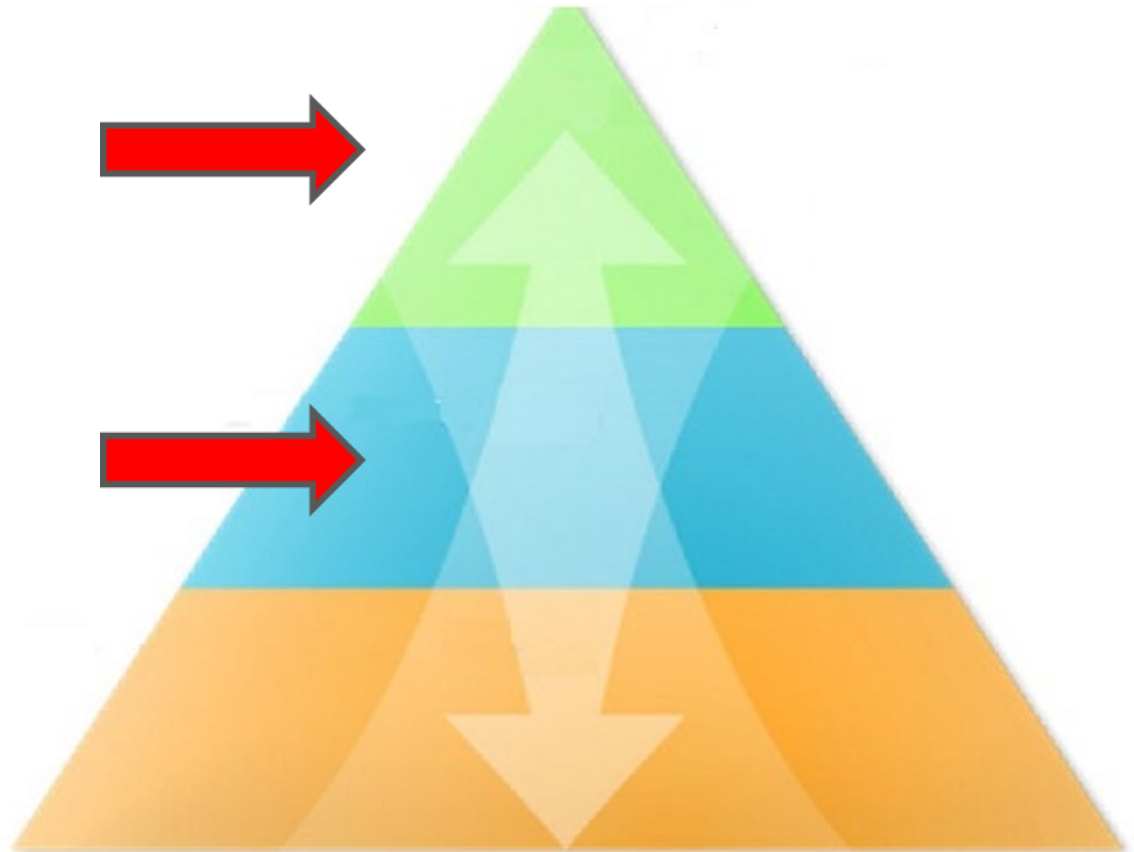
Hierarchical governance

- Highly centralized
- Top-down
- Scientist and bureaucrat led



Market governance

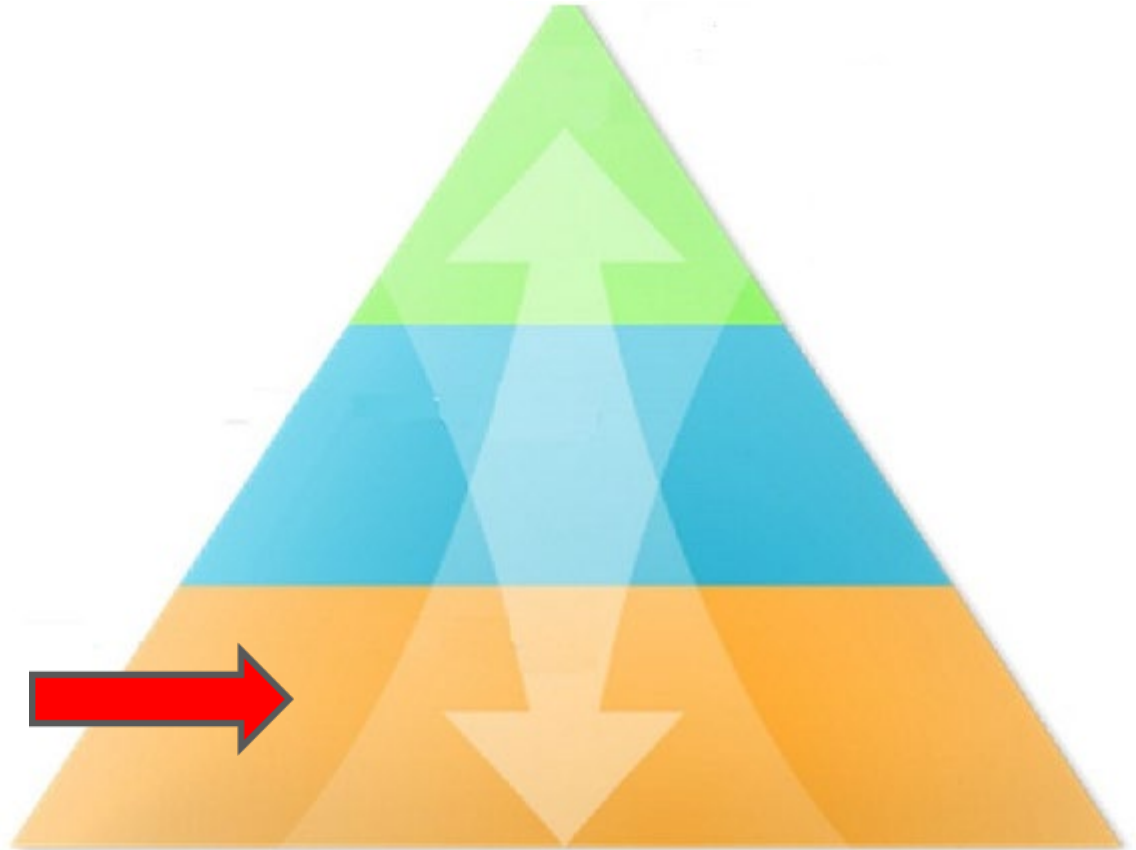
- Based on neo-liberal ideology
- Top-down initiated, then 'free market' led
- Enacted by scientists and bureaucrats



Participatory governance – type II

Community-based

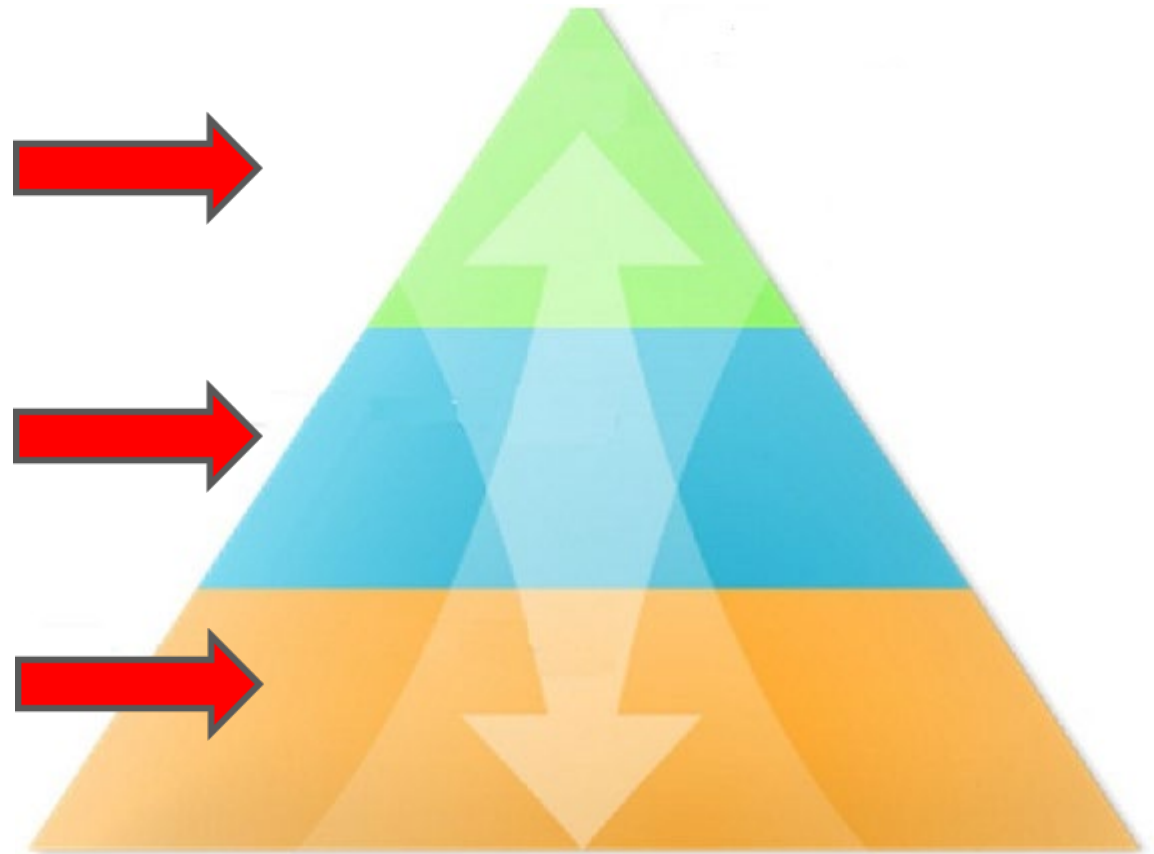
- Involves not just fishers, but all stakeholders
- Power devolved to local community
- Community decision-making



Participatory governance – type I

Co-management

- Only partial devolution of power
- Power shared with state institutions
- Mutual and equal decision-making



e.g. Advisory Councils

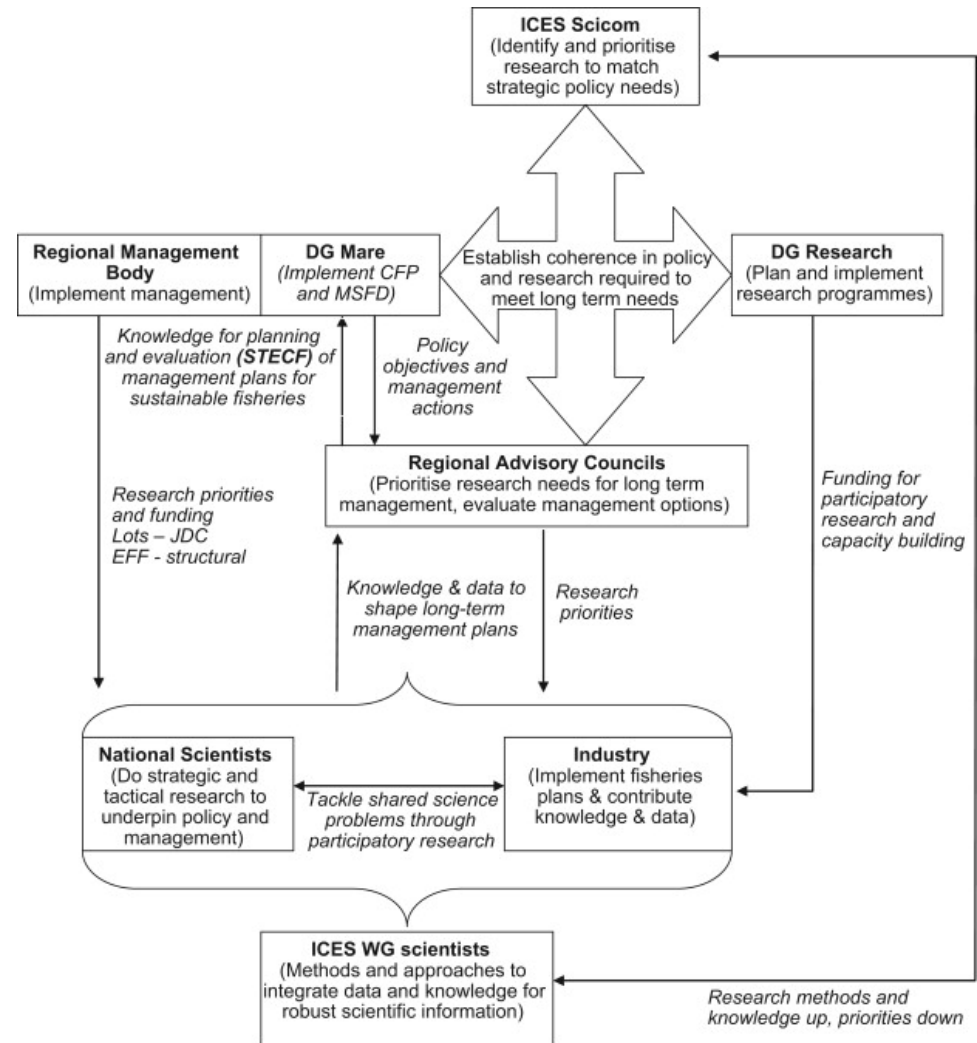
Working?



- DG MARE endorsed horse mackerel plan



- Limited representation
- Simply commenting on top-down advice
- Limited mandate



e.g. Canadian inshore management

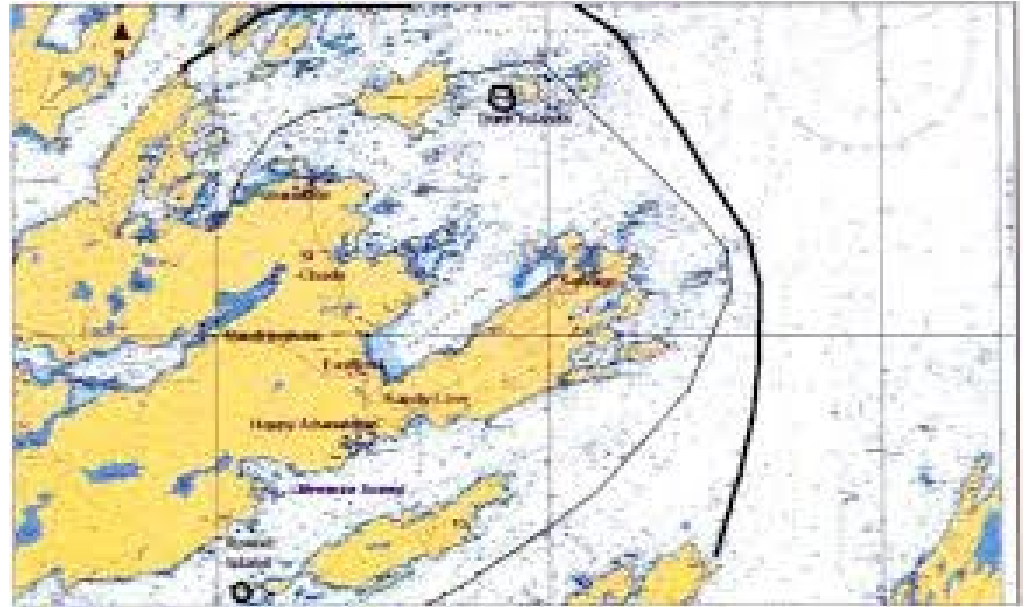
Working?



- Exclusive fishing zone created
- Agreement
- Record profits (initially)



- Disagreement
- Powerful imbalance



Question	Yes (%)	No (%)
Are you in favour of the trap limit in your zone?	61.8	38.2
Are you in favour of the limited entry ratio in effect in your zone?	69.8	30.2
Should your zone council change the number of traps fishermen can fish on a line?	24.0	76.0
Should your zone council change the times that fishing is allowed?	24.1	75.9

Final thought – how important is scale?

- Advisory Councils too removed to consider inshore?
- Some failures in Canada due to local vs. national conflicts
- Local options often preferred
 - e.g. Philippines, Inshore Conference

